

**PRODUCT CODE: EWS1**  
SWITCH BOX

**DESCRIPTION**

16mm 1 Gang Switch Box

**FINISH**

Pre Galvanised

**MATERIAL**

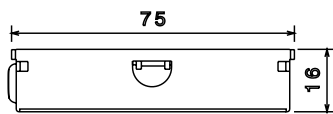
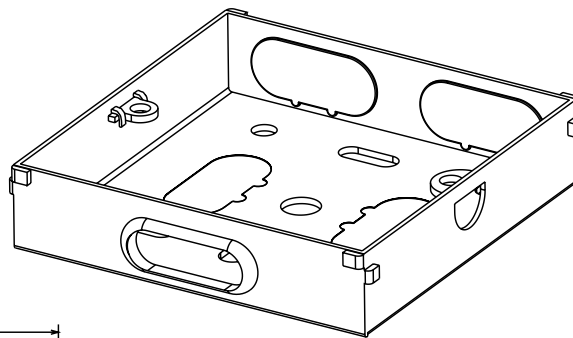
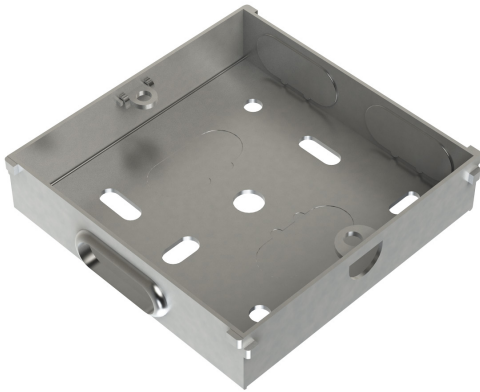
Sheet steel to comply with BS4662

**PACKAGING**

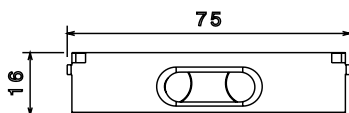
Packed in qty 20

**ADDITIONAL NOTES**

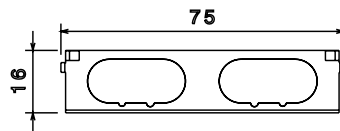
Comprises body and earth terminal with screw  
1 fixed lug and 1 adjustable lug  
Compliant to BS4662 & LU Standard 1-085 (for use on surface & sub-surface locations)



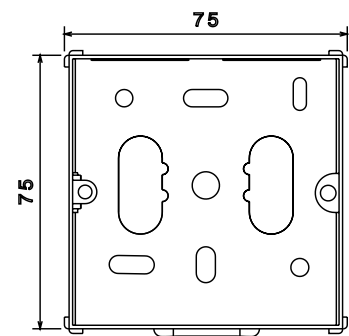
Front view



side view



Side view



Top view